



DATE: November 15th, 2023
TO: Members of the Board of Directors
FROM: John Gibson, Chief Plant Operator
SUBJECT: OPERATION REPORT: October, 2023

Regulatory Compliance

- Reviewed a sewer lateral CCTV inspection and issued a certificate of compliance for 100 Tina Way.

Sampling and Monitoring

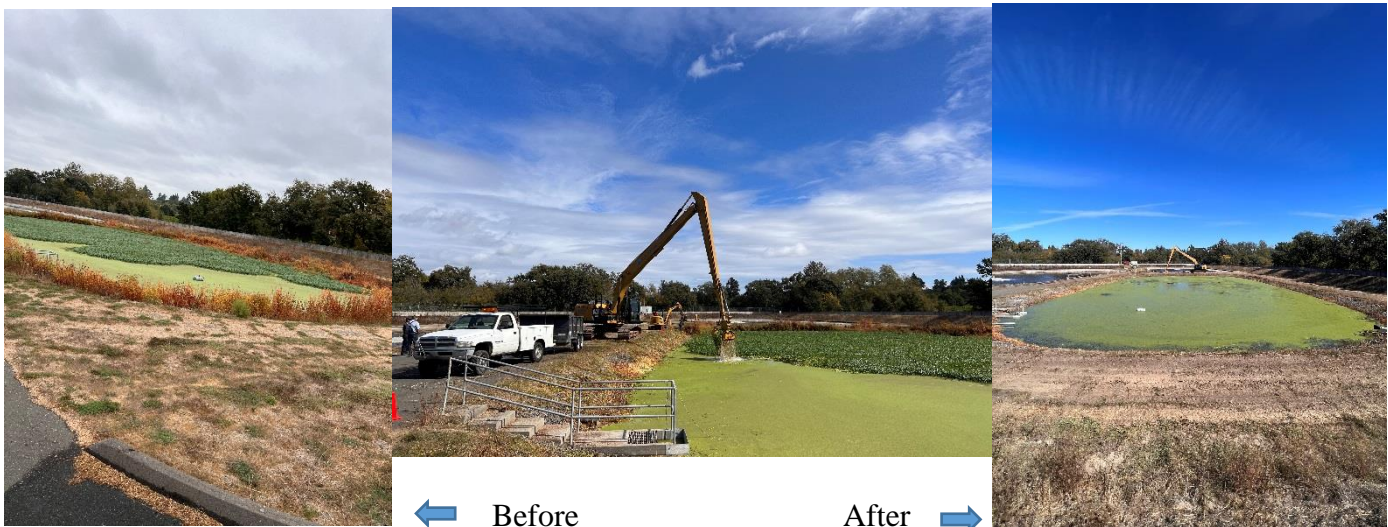
- Conducted required sampling and analysis on a daily, weekly, and monthly basis, as mandated by the NPDES permit.

Operations Report: Operations, Process Control, and Preventative Maintenance

The following activities were carried out as part of our ongoing efforts to ensure efficient operations, maintain process control, and implement preventative maintenance measures:

Settling Pond Floating Weed Removal

Water Works utilized a 60-foot-long reach excavator with a 4-foot perforated clam shell attachment to remove large floating weed mats from the settling pond. These mats were then dewatered in the dump trailer and processed in the compost facility. Additionally, vegetation growth around the pond perimeter was removed and composted.





- Completed servicing for Dodge #15, including the installation of new tires and front brakes.
- Cleared brush and removed fallen trees from the discharge pipeline outfall berm leading to Atascadero Creek.
- Applies finished compost in the West irrigation field.
- Addressed a cracked hydraulic hose on the Case 480 skip loader, replacing it and replenishing the hydraulic fluid.
- Continued weekly testing and inspections for both the plant and backup generators at Lift Station #1.
- Replaced a faulty turbidity meter bulb and maintained weekly cleaning and flushing of the 1748E turbidity meters before startup
- Conducted weekly flushing of the SAF rotary gear pump and froth system using a rust inhibitor. This preventive measure aims to prevent pump seizing and minimize the need for callouts.
- Performed maintenance on the 75 HP effluent pump, which involved greasing the bearings and installing a new hour meter. PumpMan technicians replaced the coupler connection between the motor and gearbox and realigned the pump and motor to minimize vibrations.